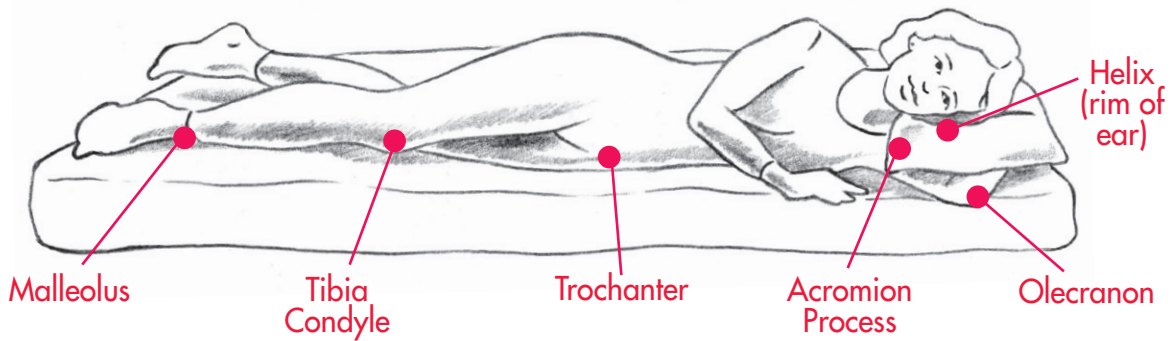
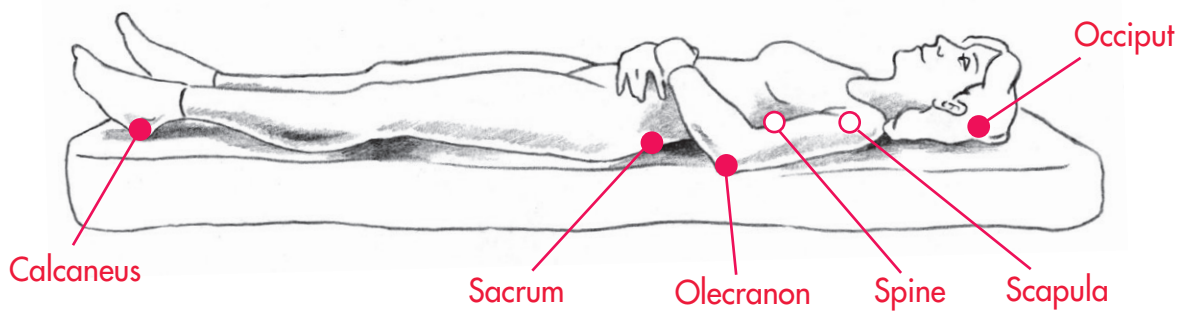


Common Pressure Points

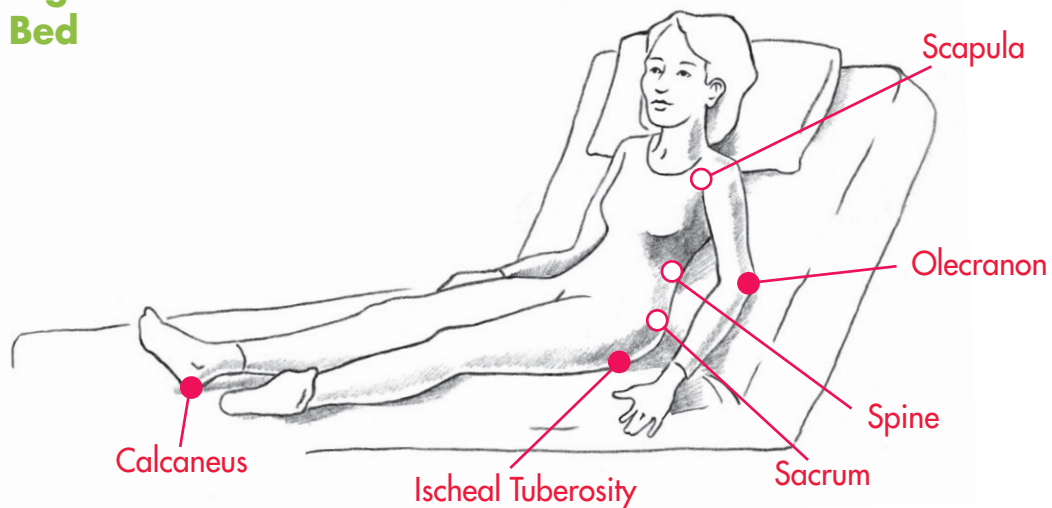
Patient on Side



Patient on Back



Patient Sitting Upright in Bed

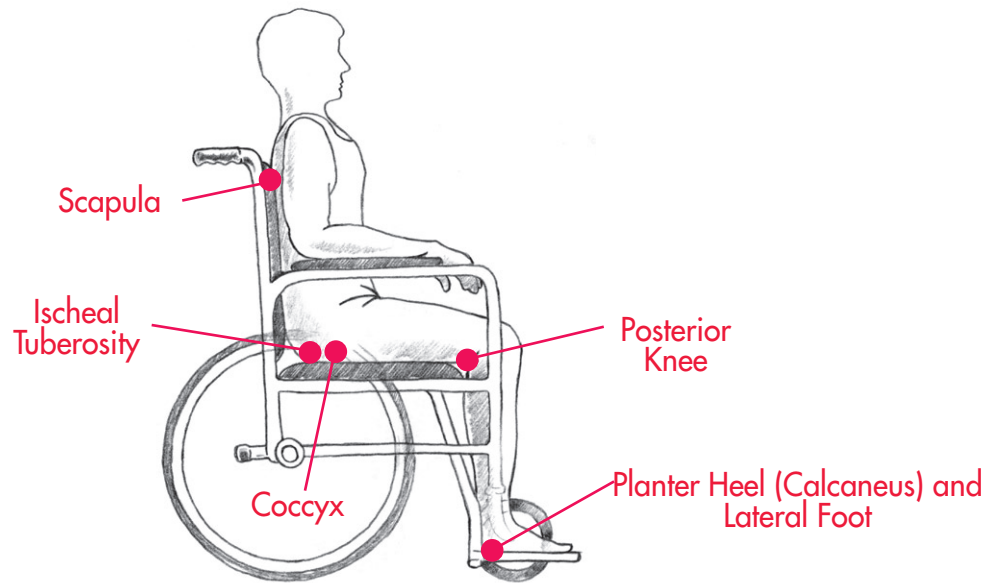


Brought to you by



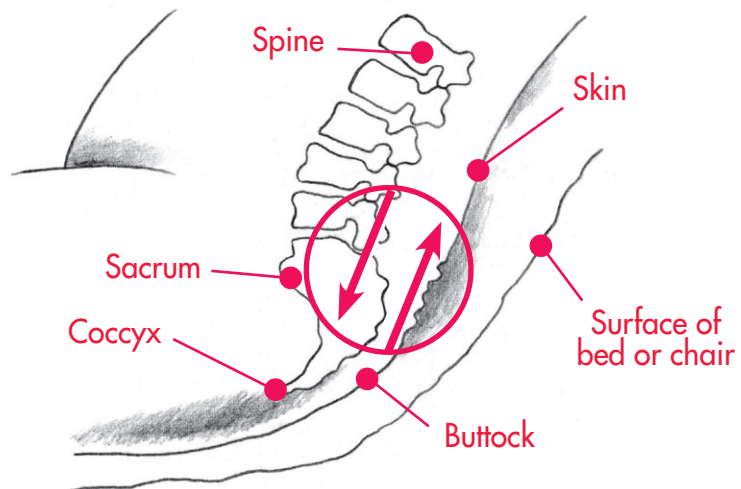
Common Pressure Points

Patient in a Wheelchair

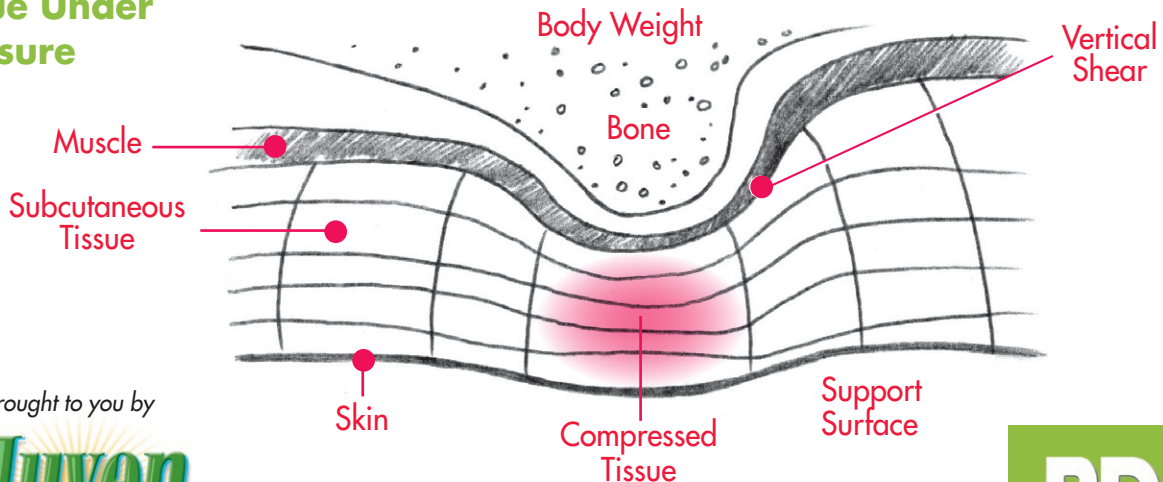


Shearing Force

Shear: a deformation of an object (tissue) in which parallel planes (bone, muscle, subcutaneous tissue and skin) remain parallel but are shifted in a direction parallel to themselves (www.wordnet.princeton.edu/perl/webwn)



Tissue Under Pressure



Brought to you by

